

200 nm
└─┘

Mag = 30.00 K X

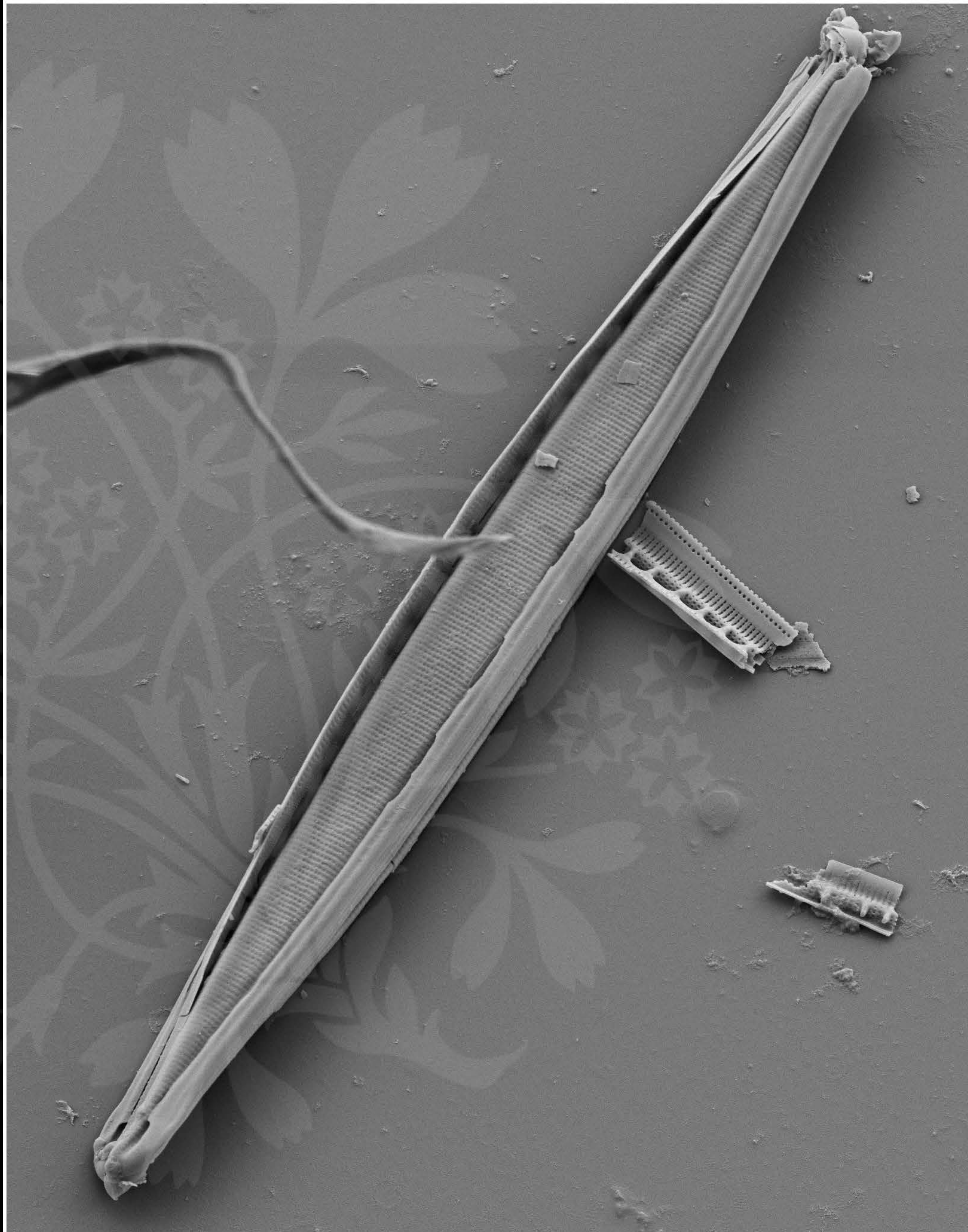
EHT = 4.00 kV

Signal A = SE2 Date :23 May 2017

WD = 4.4 mm

File Name = BC0795_01.tif





2 μm

Mag = 3.60 K X

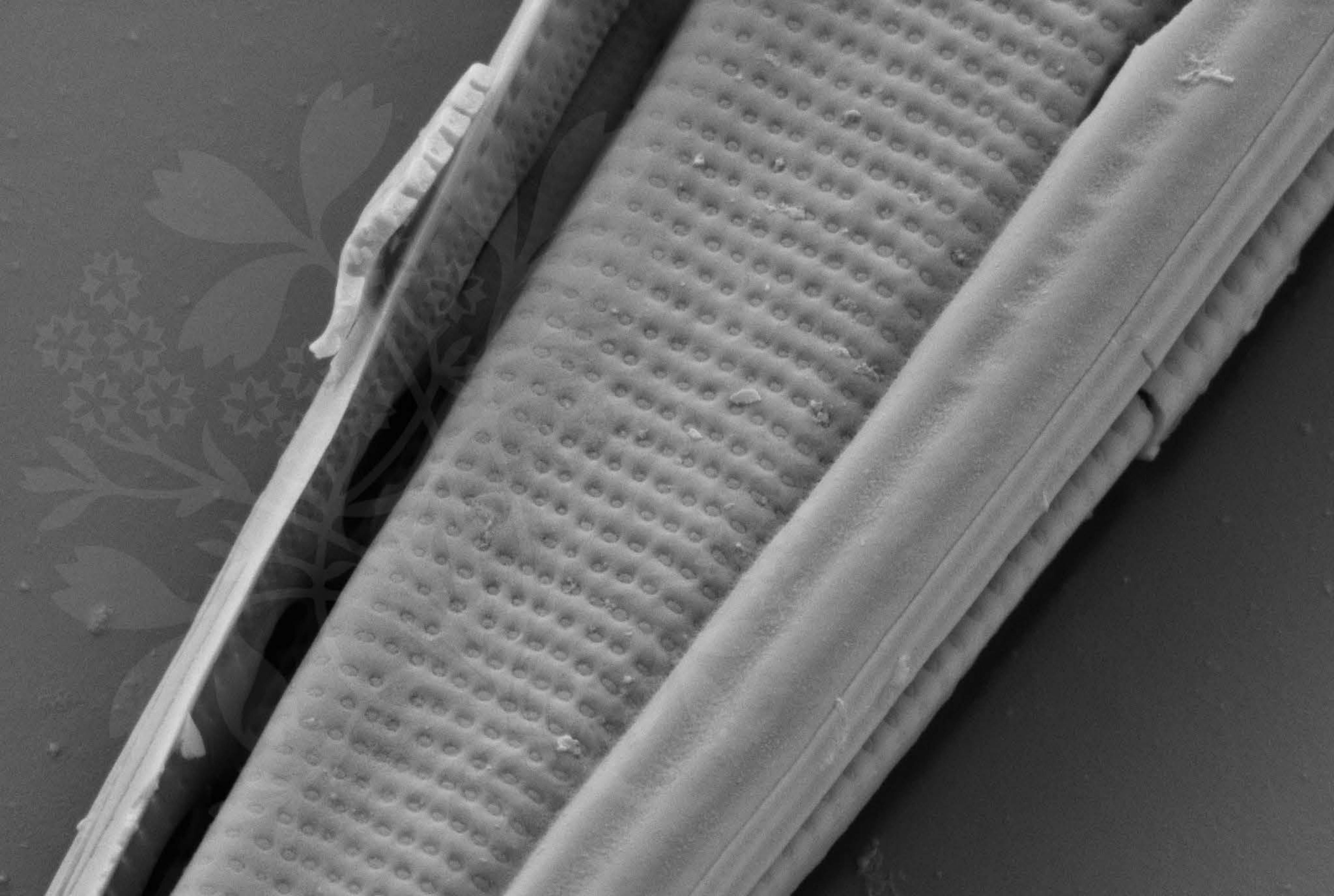
EHT = 4.00 kV

Signal A = SE2 Date :23 May 2017

WD = 4.4 mm

File Name = BC0795_02.tif





200 nm
└─┘

Mag = 30.00 K X

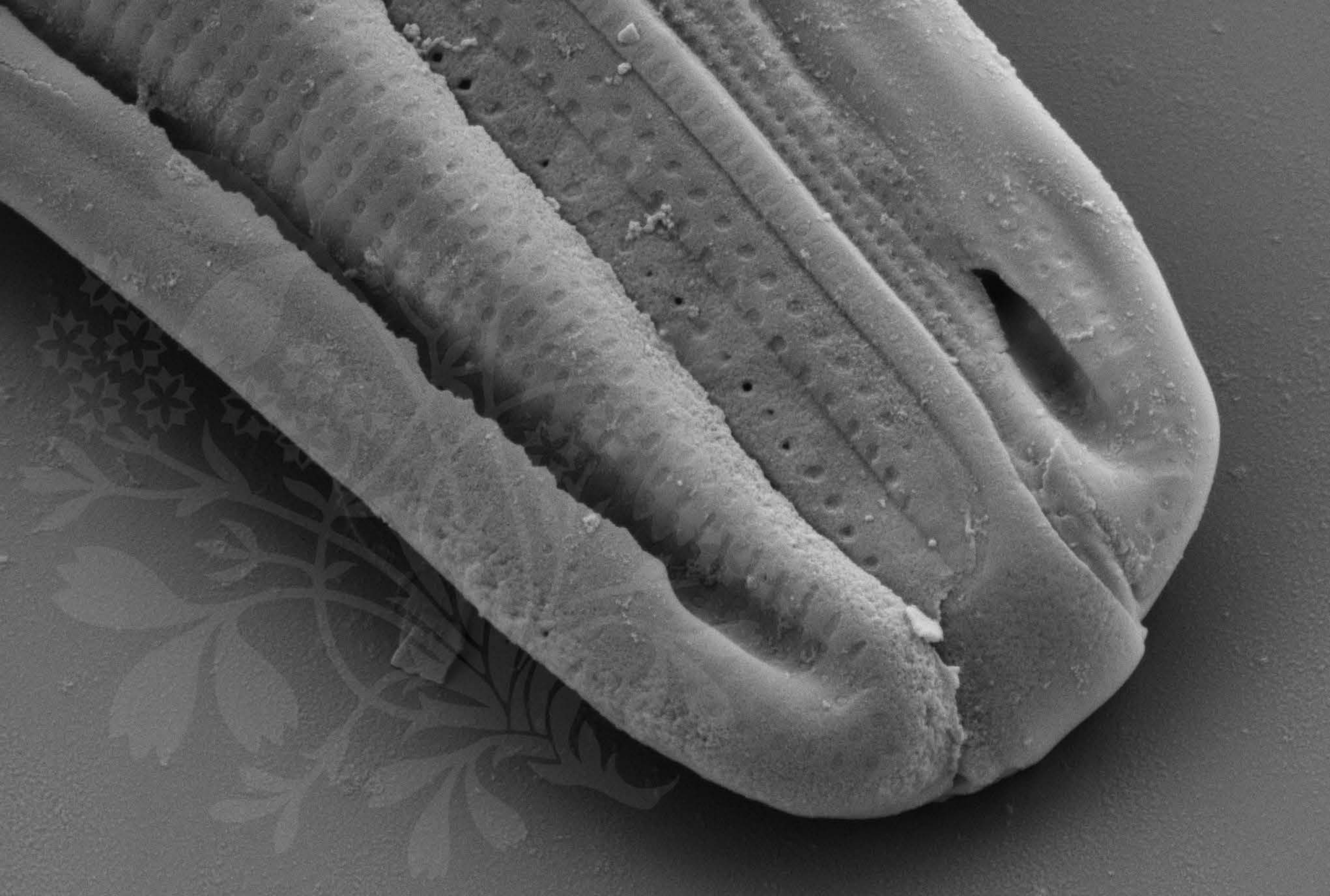
EHT = 4.00 kV

Signal A = SE2 Date :23 May 2017

WD = 4.4 mm

File Name = BC0795_03.tif





200 nm
└─┘

Mag = 30.00 K X

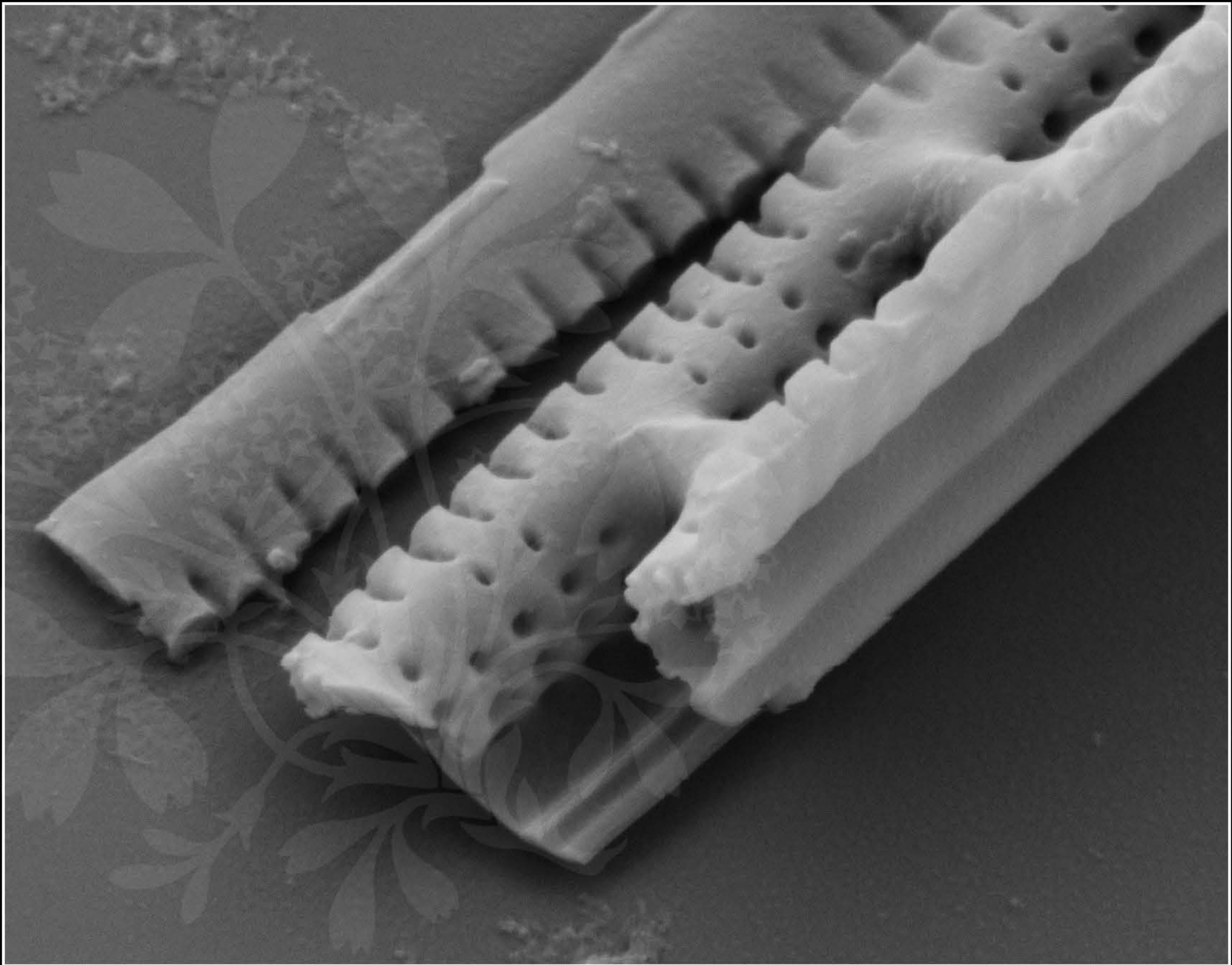
EHT = 4.00 kV

Signal A = SE2 Date :23 May 2017

WD = 4.4 mm

File Name = BC0795_04.tif





100 nm

H

Mag = 50.52 K X

EHT = 5.00 kV

Signal A = SE2 Date :3 Oct 2018

WD = 4.5 mm

File Name = BC0795_30deg_05.tif

